

T300P

Appliance Specifications

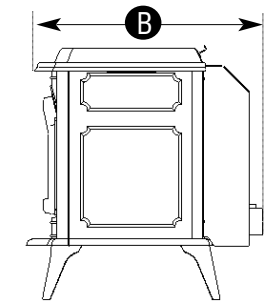
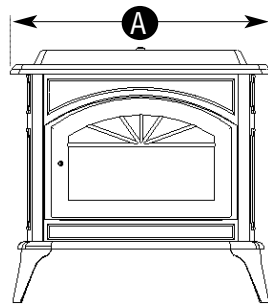
Features

- Durable Cast Iron Construction
- Three Rich Enamel Colors: Hunter Green, Ebony Black, Mojave Sand, Or Painted Models in Metallic Black
- Photo Eye Technology
- State-Of-The-Art Microprocessor Control
- Full Automatic On/Off Thermostat Operation
- Standard Fast-Fire Self Igniter and Wall Thermostat
- Warranty: 2 Years Electrical, 5 Years Steel

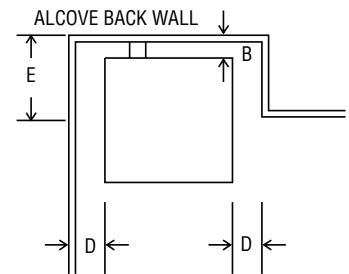
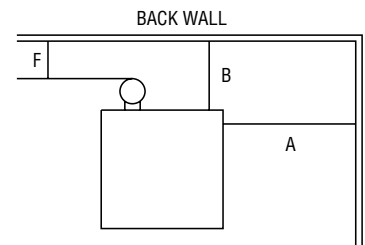
Benefits

- Years Of Carefree Warmth
- Colors To Fit Any Decor
- Peace Of Mind—Advanced Safety System
- Multiple Heat Output Levels For Maximum Comfort
- Freedom From Constant Tending Of The Fire “Set And Forget” Controls.
- Peace Of Mind. One Of The Strongest Warranty Programs In The Industry

Traditions Pellet Stove	
	FREESTANDING
DIMENSIONS	
Width	28-3/4"
Height	28-3/4"
Depth	29-1/2"
CAPACITIES	
BTU range	*9,900 – 32,000
Fuel capacity	50 lbs.
Burn time	**12 – 40 hrs
EFFICIENCIES & FEDERAL EMISSIONS	
Overall efficiency	85%
Emission Status	**0.9 gm/hr. Exempt
CLEARANCES	
Back	2"
Side	6"



- A** Overall Width 28-3/4"
- B** Overall Depth 29-1/2"
- C** Overall Height 28-3/4"



The Traditions™ is approved for mobile home installation. This stove is manufactured and shipped with the Ultra Grate installed, which enables it to burn both “Premium” grade and “Standard” grade wood pellet fuel with up to 3% ash content as defined by the PFI.

*BTUs vary with pellet type.

**The burn time will vary with size and type of fuel being used. Safety tested by: Warnock Hersey, Vancouver, B.C. Approved to: UL1482, UL907, ULCS627, CSAB3662, ULCS628, ASTM E 1509-93.

***Traditions test results. Results based on EPA test methods. Efficiencies vary with fuel feed rates. Federal Emissions Standard—7.5 grams/hr. particulate. Ultra Grate U.S. patent #5137010, 5383446.

The above dimensions are for general purposes only. See installation manual for specific diagrams. Lennox Hearth Products maintains an excellent warranty program and trained, fully qualified Lennox Hearth Products pellet stove service and installation technicians throughout its entire dealer sales and service network. Lennox Hearth Products reserves the right to change products, specifications and prices without notice.

MINIMUM CLEARANCES TO COMBUSTIBLE MATERIALS

FREESTANDING STOVE INSTALLATION	MOBILE HOME OR RESIDENTIAL INSTALLATION	
	HORIZONTAL FLUE-DIRECTLY THROUGH WALL INSTALLATION	INTERIOR VERTICAL FLUE INSTALLATION
SIDEWALL TO UNIT A	6”/150 MM	6”/150 MM
BACKWALL TO UNIT B	2”/50 MM	9”/230 MM
WALL TO UNIT CORNER C	2”/50 MM	2”/50 MM
ALCOVE TO CAST TOP D	6”/150 MM	6”/150 MM
MAX. DEPTH OF ALCOVE E	18”/460 MM	18”/460 MM
FLUE TO WALL F	N/A	3”/75 MM
FRONT/REAR/SIDE TO FLOOR PROTECTION OUTSIDE EDGE 6”/150 MM	I	6”/150 MM
	MINIMUM ALCOVE HEIGHT	48”/1220 MM
	MINIMUM ALCOVE WIDTH	41”/1050 MM

TRADITIONS
BY LENNOX HEARTH PRODUCTS

Lennox Hearth Products
www.lennoxhearthproducts.com